



Quick Start Guide

Introduction

1.1 Purpose

This guide provides the user with the necessary information to configure an assessment of their VMware environment.

1.2 Aim

This document should enable anyone using the VMInformer assessment tool to successfully configure an assessment of their virtual environment as well as understanding how to select policy files and setup the other options within the tool.

1.3 Assumptions

VMInformer v2 assesses VMware infrastructure. It is assumed that you have access to a VMware environment that contains the following components:-

- ESX 3.x, ESX 4.x, ESXi 3.5 or ESXi 4.x
- Virtual Center or vCenter 2.5

It is also assumed that you have downloaded and installed the VMInformer security assessment tool as per the steps in the VMInformer setup guide document., and you have activated VMInformer, either with your Community Edition, or Professional licence. If you have not successfully installed VMInformer, please read these guides first.

1.4 System requirements

The system requirements for installing VMInformer are:-

- Microsoft Windows XP, Windows 7, Win 2003 or Win 2008
- Microsoft .NET 3.5 SP1

1.5 Audience

This document is intended for the following target audience:-

- Enterprise customers
- IT network support teams
- System Administrators

1.6 VMInformer Community Edition and Professional

The Community Edition is a fully featured version of VMInformer. It is targeted at very small businesses and private users. It is also used by corporations to evaluate the functionality to VMInformer. The Community Edition has the following restrictions:

1. Only one host can be assessed (no restriction on the number of guests);
2. Database and storage maps are not produced;
3. Printing and reporting (other than on-screen) is not enabled; and
4. Only standard policies are available.

NOTE: If you are using VMInformer Community Edition in a trial, select your target server carefully to get the most from your VMInformer assessment. You should select the biggest, or most complex, guest structure.

2 Installing and Activating VMInformer

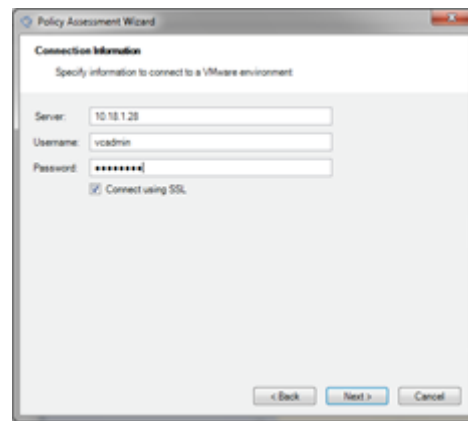
The installation of VMInformer is straightforward. If you need help Please follow the instructions in the VMInformer Setup and Activation Guides.

3 Scan Assessment

The following steps show you how to perform an assessment of your virtual environment.

Policy Assessment Wizard

1. Start the Policy Assessment Wizard. Select FILE, and NEW on menu bar, or select the new icon
2. Accept the terms and conditions of use to proceed with the scan
3. Enter the credentials for your ESX Host or Virtual Center (vCenter)
4. VMInformer will now try to connect to your ESX host or Virtual Center (You may encounter a certificate warning. This is normal as VMware ships with a self-signed certificate. If you see this, just click YES.)



NOTES ON CREDENTIALS:

- i. If you are entering the credentials for a single ESX Host, then the username is always the root user account for that server (and associated password). These credentials are used to authenticate to the VMware API in much the same way a standard VMware VI client would.
- ii. If you are connecting to a Virtual Center then provide an account that is able to see the entire virtual infrastructure. This does not have to be an administration account. It can be a read-only account that has entitlement from the Data Center level down.

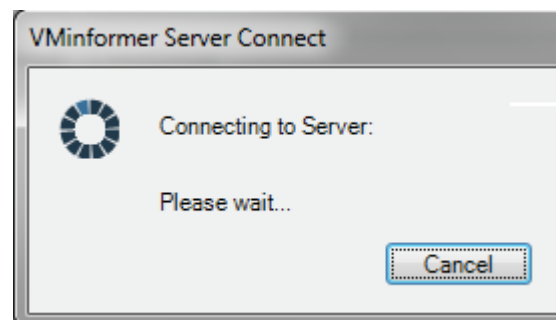
Virtual Center Database Checks

[Community Edition user skip this step] This part of the assessment is optional.

To perform this part of the assessment you must provide a valid SQL account that can access the Virtual Center database. Enter the hostname or IP address of the Virtual Center database as well as the user account credentials required for authentication.

1. Click NEXT to continue.

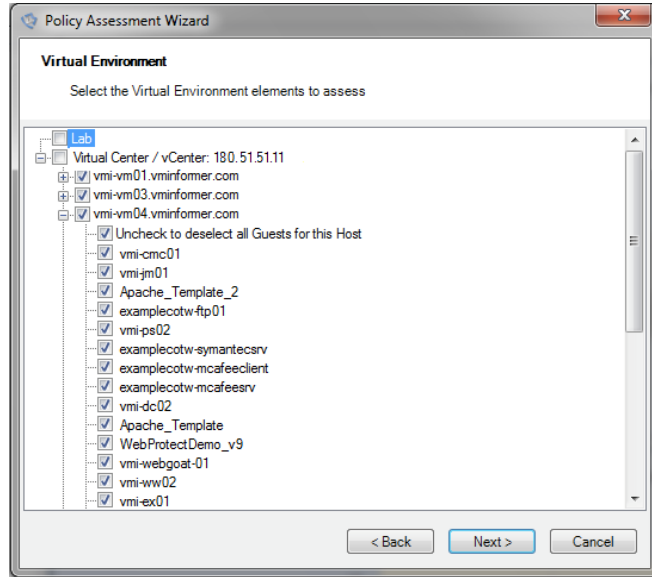
VMInformer may, depending on the size of your virtual infrastructure and the quality of your connection to it, take a few minutes to retrieve the inventory of hosts and virtual machines from the virtual environment.



Inventory selection

1. Select the ESX Hosts and Virtual Machines you wish to assess by selecting the check box against a particular node.

To select or deselect all hosts CHECK or UNCHECK the check box marked 'Uncheck to deselect all Guests for this Host'.

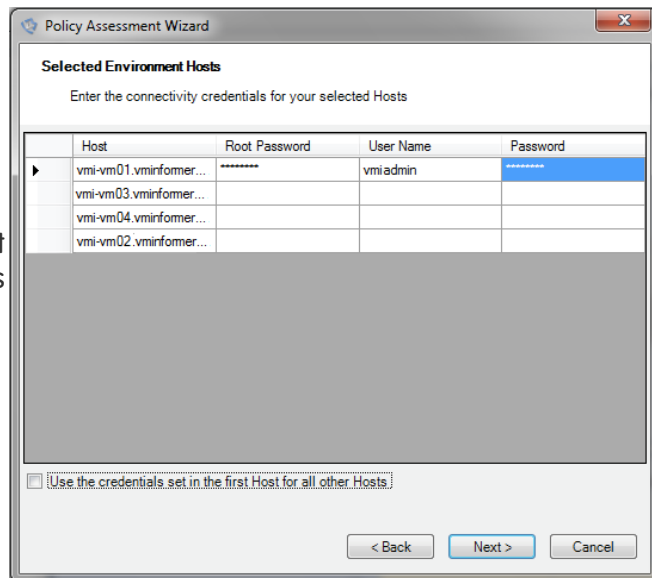


NOTE: Make sure that all the ESX hosts selected have fully resolvable names in DNS.

Selected Environment Hosts

1. For each of the ESX hosts that were selected in the previous step enter the root account password for each of the hosts as well as the username and password of a lower privileged account.

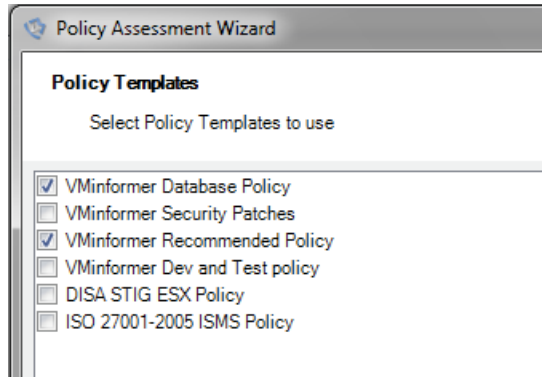
[If these credentials are the same for all hosts - use the credentials set in the first Host for all other Hosts]



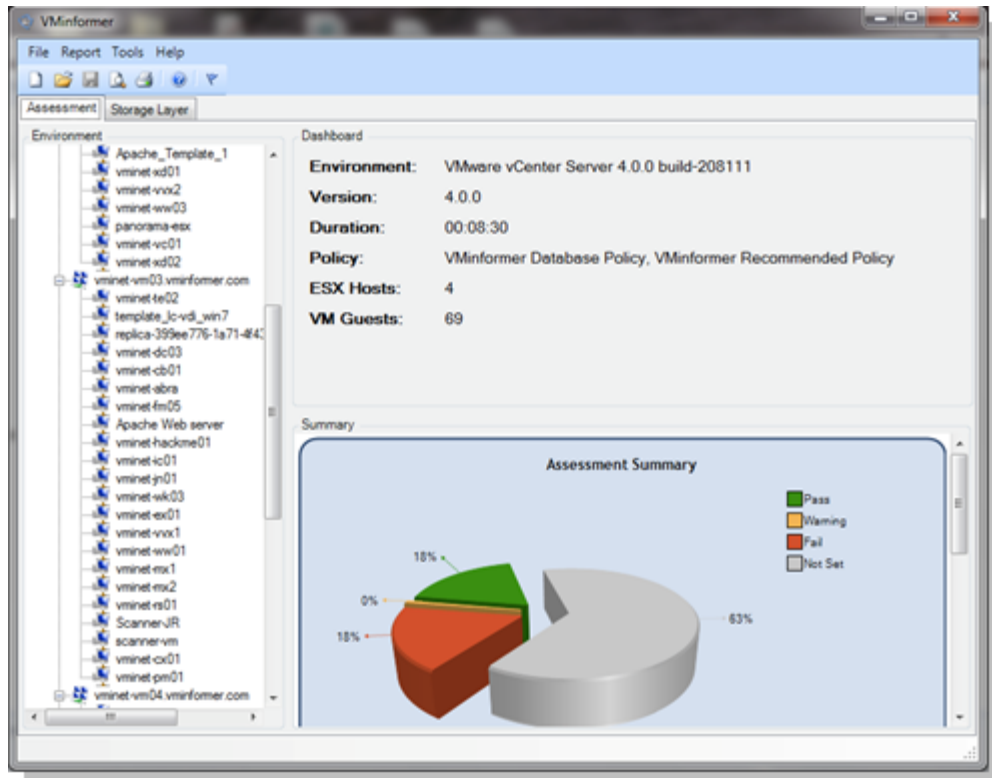
NOTE: If a lower privileged account does not exist on the ESX hosts (best practice advises that such an account should exist) then this account will have to be created before VMInformer can be used. The account, a normal user account with no special privileges except the ability to logon to the ESX Service console. If you continue the assessment wizard without this account then the scan will fail.

Policy Template Selection

[Community Edition user only use the **VMInformer Recommended Policy**] Select which policies you wish to assess your environment against. The default policy templates that ship with the tool are the 'VMInformer Database Policy' and the 'VMInformer Recommended Policy'.



Once the scan is completed the results will be displayed within the main dashboard of VMInformer as shown in the example below.

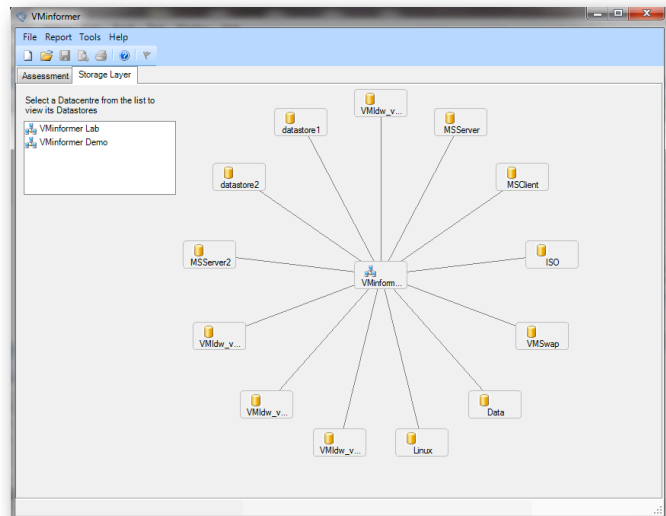


4. Storage Layer

The storage layer tab is disabled for the community edition of the tool and therefore is not available.

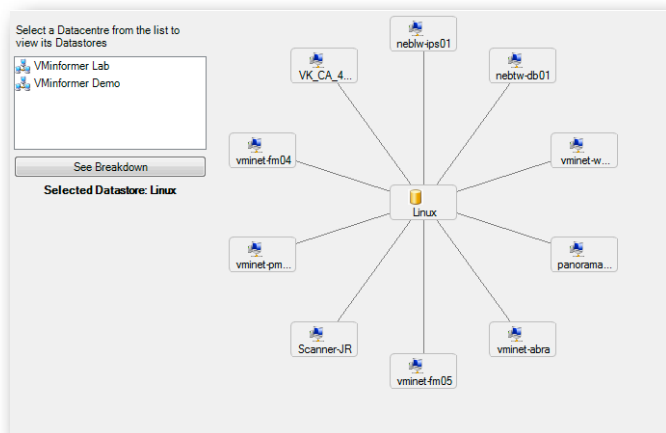
Storage Layer Map

1. Select the datacenter in the panel on the left the datastore's connected to the datacenter will then appear as a map. Each of the nodes represents a storage volume.



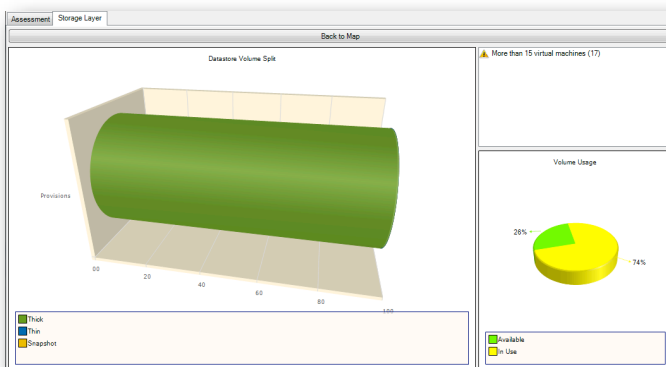
Datastore detail

2. Once you have selected a datastore the node map changes to show all of the virtual machines contained within that datastore.



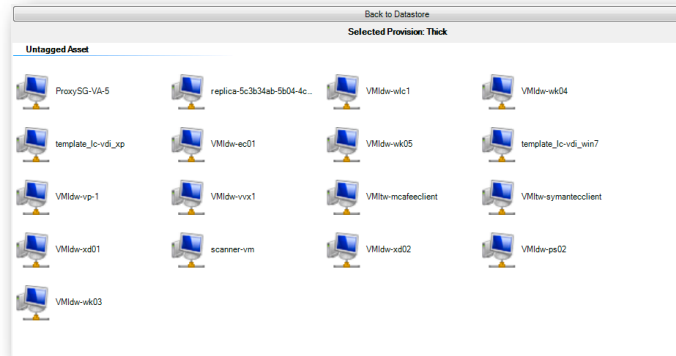
Virtual Machine Provision Types

3. Select the 'See Breakdown' button in the datastore detail map to show the machine provision types and volume usage. Warnings about volume usage, data leakage and snapshots are displayed in the top right window.



Virtual Machine Business Assets

4. Selecting a machine provision type in the chart will display all of the virtual machine of that particular provision type, namely snapshots, thin or thick provisioned. If you have previously defined 'Business Asset Tags' for your virtual machines then these will be grouped accordingly. This will aid in identifying any data leakage issues.



5. Reports and Options

Once an assessment has been completed the results can be saved in XML format or exported as a PDF report.

Scans saved in XML format can be reloaded for future analysis.

To save a scan select save or save as from the 'FILE' menu or select the 'FILE SAVE' icon.

To export a scan in PDF format select the 'EXPORT AS PDF' option from the 'REPORT' menu.

5.1 VMInformer Options

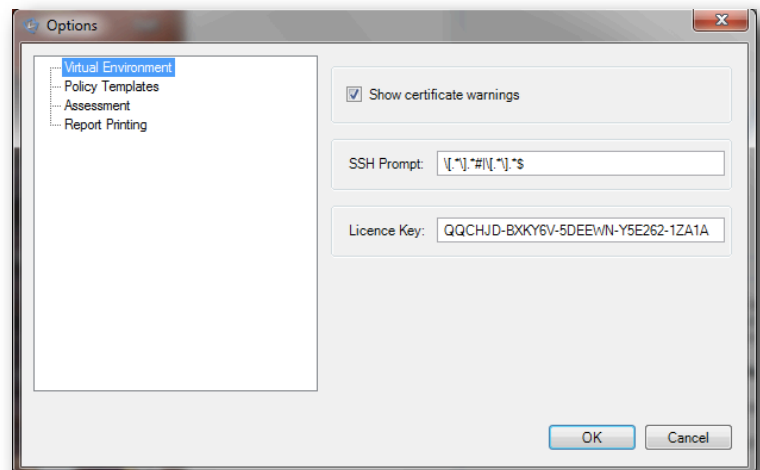
VMInformer has a number of options that effect the way the scan assessment runs as well as reports and policy selection. These options are available from the 'TOOLS' menu under 'OPTIONS'.

Virtual Environment

The virtual environment option allows you to enable or disable certificate warnings that will appear if the ESX host certificate is not trusted.

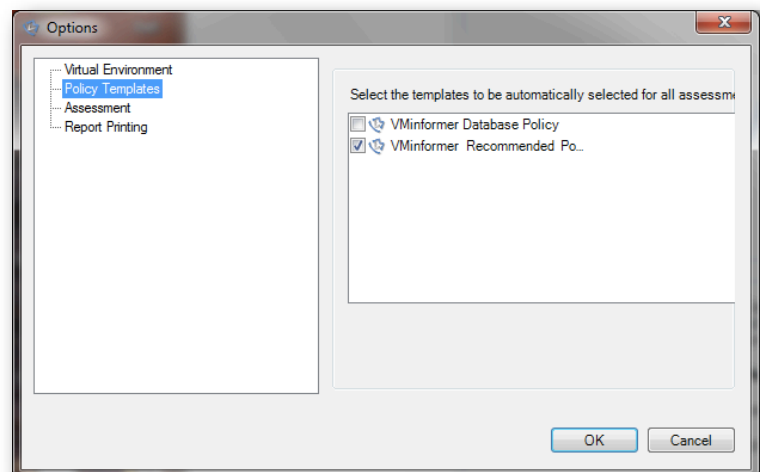
The SSH Prompt regex should only be changed under direct supervision from VMInformer support so do not change it.

The license key displays your current license.



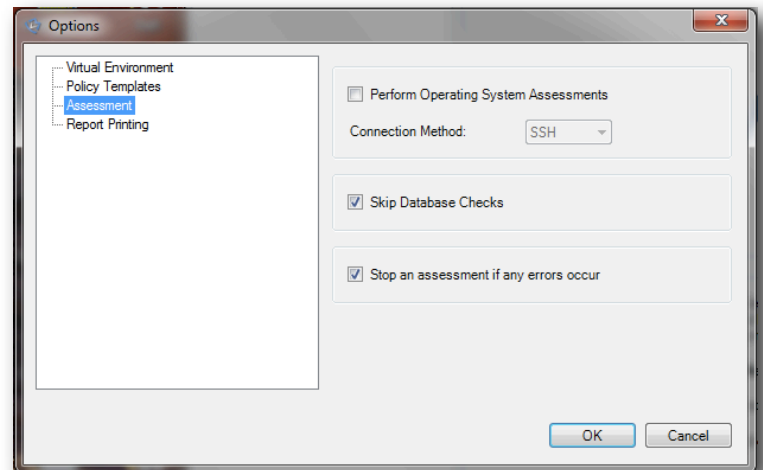
Policy Templates

Policy Templates displays the current installed policies. Selecting a policy under this option will make it the default policy for a scan assessment. Multiple policies can be selected so long as they do not conflict with each other.



Assessment

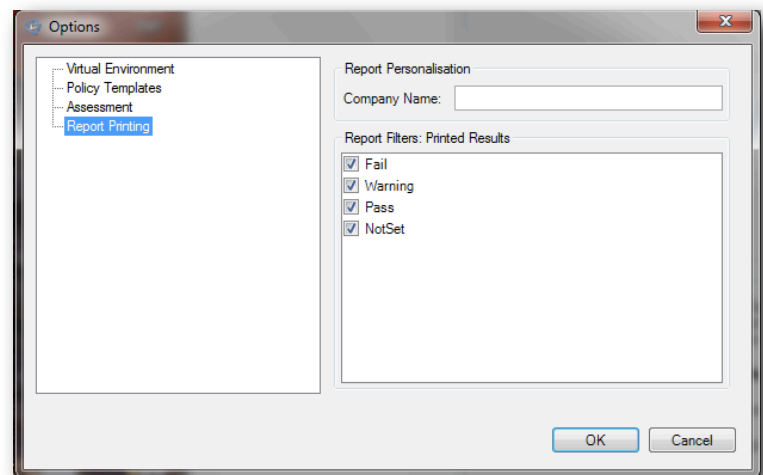
Assessment options allow OS checks to be enabled or disabled as well as allowing database checks to be skipped or not.



Report Printing

The report printing option allows you to set a company name for the report title as well as setting filters for the report.

Unchecking a report filter will mean the detail for that particular result type will be summarized rather than showing the detail.



Further Information

If you require further information then please visit the VMInformer support site where you will find further documents to assist you with getting the best out of the product.

www.vminformer.com/support