

Deepnet Unified Authentication for Citrix

Citrix provides a family of solutions that allow company information to be accessed from anywhere, anytime by employees, contractors, business partners or customers. While the Citrix solutions have made it easier for users to access critical information, simply using passwords to authenticate users can put a company at risk. Deepnet Authentication enhances security for Citrix solutions by authenticating users with a strong two-factor authentication system.

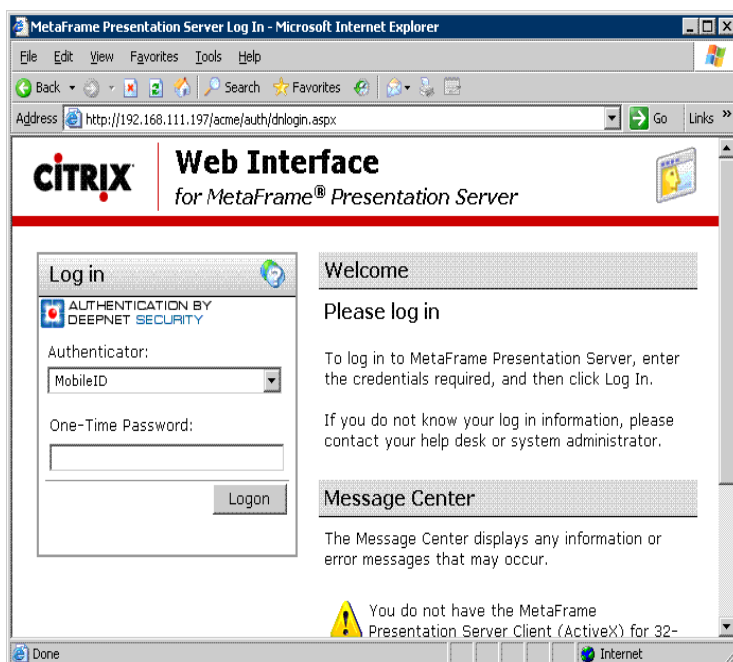
Deepnet Unified Authentication helps enable secure access to the following Citrix solutions:

- Citrix Web Interface for Presentation Server
- Citrix Access Gateway with Advanced Access Control
- NetScaler SSL VPN

Citrix Web Interface

Citrix Web Interface is an application deployment system that provides users with access to MetaFrame applications through a standard Web browser. Each user is presented with all the applications published in the MetaFrame server farms for that user. With Web Interface, administrators have centralized application management capabilities and complete control over the application deployment process.

Deepnet Unified Authentication provides a module for Citrix Web Interface. Once enabled, it requires Citrix users to successfully authenticate with two factors of credentials, such as a one-time password and a static password, before access is granted.



- Delivers strong two-factor authentication to the Citrix solutions
- Allows both local and external trusted users secure access to critical applications.
- The solution integrates seamlessly with the Citrix environment.

Citrix Access Gateway

Citrix Access Gateway with Advance Access Control products are universal SSL VPN appliances providing a secure, always-on, single point-of-access to an organization's applications and data. The Citrix Access appliance is deployed in an organization's DMZ, and secures all traffic with standards based SSL. Remote users connect via an easy-to-use, Web-downloaded and updated client.

Deepnet Unified Authentication supports Citrix Access Gateway through the RADIUS protocol with the built-in Deepnet RADIUS server.